

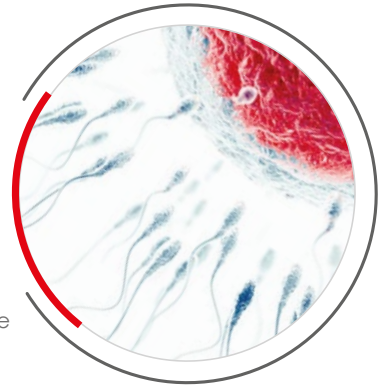


Equine reproduction technologies





IMV TECHNOLOGIES. FOR LIFE.



INNOVATION. FOR LIFE.

In 1963, Robert Cassou founded IMV Technologies and set the standard for semen storage and insemination with the revolutionary «French Straw».

Since then, we've approached every new solution with the same innovative spirit as he did.

Today, we are still leaders in applied and disruptive technologies. We not only make things; we also improve things that already exist.

TECHNOLOGY. FOR LIFE.

Curiosity is one of our main drivers. We're never satisfied with the status quo. From semen collection to wireless ultrasound, this philosophy is why our technology is accepted and relied upon around the world.

Beyond technology, we create state-of-the-art techniques and programs to support its implementation.

SUSTAINABILITY. FOR LIFE.

Life is nothing without the planet we call home. That's why in everything we do, we push to implement sustainable practices that minimize our carbon footprint. It's not just our stated corporate responsibility. It is our life.

We challenge ourselves with new thinking that drives toward sustainable food sources for future generations. Through the use of our technologies, we believe land resources can be more efficiently managed and agriculture can become more sustainable. We aim to preserve Earth's abundance and beauty.

We have a genuine desire to make a positive impact.

REPRODUCTION. FOR LIFE.

For over 60 years, we've been at the leading edge of artificial insemination technology.

Over time, we've evolved to become more than an artificial insemination company. Our reproductive biotechnologies, which have become the standard across the globe, touch every aspect of reproduction, including collecting gametes, confirming pregnancy and managing data.

With an exponentially growing population, abundant and sustainable food sources are critical. Our technologies make this possible. This notion is a driving force behind IMV Technologies.

Equine reproduction technologies

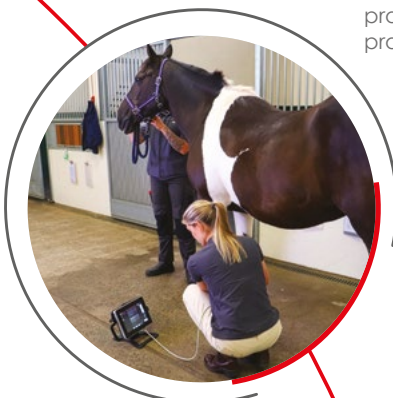
We have been in the equine field for more than 40 years. Our headquarters is in Normandy, France, the center of trotter and thoroughbred breeding. As such, we collaborate and partner closely with equine reproduction professionals in research, technical support and product development.

Several partnerships with INRA, National Horse Stud, veterinary universities and foreign universities in conjunction with our R&D team provide you with the most current experience, information and products.

Our international network and agents in over 120 countries offers unmatched knowledge of foreign markets and their respective differences.



Our goal is to provide veterinarians with high-quality products to make their job easier. We offer a full range of products and services including:

- Semen collection,
- Insemination
- Examination,
- Preservation
- Packaging
- Embryo transfer.



Contents



Preliminary diagnosis 7

-  Veterinary ultrasound..... 7
-  Protection 8





Semen collection & analysis..... 11

-  Semen collection 11
-  Semen analysis 14 **NEW** **NEW**





Semen preparation & packaging 21

-  Semen preparation 21
-  Semen packaging..... 25
-  Semen freezing 33
-  Semen storage 36

Insemination & reproduction follow-up 39

-  Semen thawing 39
-  Insemination 41
-  Veterinary ultrasound..... 44
-  Protection 46

Embryo transfer 50

-  Embryo collection 50
-  Embryo packaging..... 51
-  Embryo transfer..... 53
-  Embryo ultrasound 54

Field application & training 55

Service 56



ExaPad range

Our full ExaPad range is designed with the mixed practice vet in mind suitable for both routine work and advanced applications.



Key benefits

ExaPad

Seamlessly switch between applications with 2 probe connectors

- Large imaging viewing area
- Excellent image quality

ExaPad Mini

- Suitable for in practice or in field use
- Excellent imaging for OPU application
- Software integrations with MeatQText and EcoText

ExaPad Micro

- Compact and portable scanner
- Purposely designed accessories to support you in any use-case
- Ruggedised machine with magnesium casing and veterinary tested probes

Applications

Our Exapad range covers all applications, with each model optimized for specific features.

- Applications covered: Abdominal, Musculoskeletal, Gynecologic, OPU, Cardiology, Orthopedic, Ophthalmology
- Model focus:
 - Exapad Micro: Reproductive & Musculoskeletal Level 1
 - Exapad Mini: Reproductive & Musculoskeletal Level 2
 - Exapad: Musculoskeletal Level 3

References

- 90-3346KIT - ExaPad Veterinary ultrasound scanner
- 90-2440KIT - ExaPad Mini veterinary ultrasound scanner
- 903188 - ExaPad Micro veterinary ultrasound scanner

Related features

Teamviewer: Equipped with Teamviewer to allow for remote support on the device. Allowing you to have access to technical and clinical experts should you have any difficulty whilst imaging

CFM (Colour Flow Mapping) for:

- Negative pregnancy diagnosis from 14 days after AI
- Foetus viability confirmation (heart)
- Recipients mares for embryo transfer purpose .
- Confirmation of dominant follicle pre ovulatory
- Twin pregnancy check



ExaPad range

Probe compatibility

Product	ExaPad	Mini	Micro
 LR760V - Linear Rectal	X	X	X
 CRV460V - Curved rectal probe	X	X	X
 L738V- Linear Tendon	X	X	X
 C360S - Convex	X	X	X
 OPU E610B - OPU, thin probe	X	X	X
 OPU E614B - OPU, thicker probe	X	X	X
 C614P - Micro-convex probe	X	X	X
 P320R - Phased array probe	X	X	
 P713R - Phased array probe	X	X	
 CC717B - Micro-convex probe	X		
 CC550V - Convex probe	X		
 LC1038V - Linear probe	X		

Specifications

	ExaPad	ExaPad Mini	ExaPad Micro
Console form	Touchscreen		
Probe connectors	2	1	1
Screen size	14 inches	12 inches	10 inches
Optional trolley	Yes	Yes	No
Battery life	60 mins	90 mins	90 mins
Optional external charger	No	No	Yes
Built in stand	Yes	Yes	No
Optional stand	No	No	Yes
Weight	6kg	4kg	2kg
Height	300mm	250mm	200mm
Width	390mm	320mm	280mm
Depth	70mm	58mm	55mm
Warranty	2 years		
Colour Doppler	Yes	Yes	Yes
Pulse wave doppler	Yes	Yes	Yes
Continuous wave doppler	Yes	Yes	No
ECG	Yes	No	No



ImaGo range

On the go reproduction focus ImaGo range is made for equine vets on the go. ImaGo's rugged, portable design and excellent image quality ensures you're always ready for high-quality care, when working across multiple farms and to busy schedules thus reducing the time and cost up to 10%.



References

ImaGoV2 with linear probe ImaGo-V2-L
 ImaGo V2 with curve probe ImaGo-V2-C
 ImaGo Flex V2 with removable probes ImaGo-V2-Flex

Probe compatibility:

Product	Flex
LR760V	X
L738V	X
C360S	X
L3130B2	X
OPU E610B	X
OPU E614B	X
L3180B	X

Key benefits

ImaGo L&C

- Presets for different species to ensure a quick start
- Lightweight and small -1.18 kg
- Interchangeable 4 hours battery can be charged in the car
- Ensures biosecurity as it can be washed in the bucket of water and submerged (IP67 standard)
- With colour flow doppler mode ImaGo helps detect non-pregnant mares earlier saving up to 4 euro per day per mare

ImaGo Flex

- Presets for different species to ensure a quick start
- Lightweight and small -1.5 kg
- Interchangeable 4 hours battery can be charged in the car
- 7 probes can be connected
- With colour flow doppler mode ImaGo helps detect non-pregnant mares earlier saving up to 4 euro per day per mare

Applications

- Reproduction
- Musculoskeletal diagnosis pre-check
- ICSI



Related features

CFM (Colour Flow Mapping)

- Negative pregnancy diagnosis from 14 days after AI
- Foetus viability confirmation (heart)
- Recipients mares for embryo transfer purpose
- Confirmation of the dominant pre-ovulatory follicle
- Twin pregnancy confirmation

Specifications:

	ImaGo L&C	ImaGo Flex
Probe connectors	0	1
Screen size	6.5 inches	6.5 inches
Battery life	4 hours	4 hours
Optional external charger	Yes	Yes
Weight	1.18 kg	1.5 kg
Dimensions	21x9x17 cm	21x7x17 cm
Colour Doppler	Yes	Yes
Resets	More than 15	More than 47
Waterproofness	IP 67	IP32
Warranty	2 years	2 years

Easi-Scan:Go

Fast, light and with minimal set-up time required, the Easi-Scan:Go is ready to go when you are, providing speedy results without sacrificing accuracy. Biosecurity is not an issue as the scanner is waterproof and completely sealed. This contributes to an even more efficient workflow on the farm.



References

ESG-SCANNER-L – Easi-Scan:Go Linear
ESG-SCANNER -C – Easi-Scan:Go Curve

Specifications:

Probe	Sealed, linear and curve, 128 elements
Charger	Stand-alone charger, can be used in the car
Battery life	Up to 5 hours
Waterproofness	IP 67, waterproof
Viewing device	Smartphone, Tablet, VGA and OLED goggles
Equine	Reproduction
Dimensions	190 x 83 x 62
Weight	850g
Warranty	2 years

Key benefits

Easi-Scan:Go Linear and Curve

- Fully sealed unit ensuring waterproof to IP67 standard
- Exceptional image quality allowing for full fertility examinations as well as non-reproductive applications such as teat scanning, lung scanning, uterine scanning, post-calving examinations and body condition assessment
- Connection with Farm Management systems to allow full picture of mare health displayed on the ultrasound image. KPI detail such as age, last inseminated, milk yield can all be visible for each individual mare. (restrictions apply)
- Connect up to 3 smart devices or BUG:Go to view the image simultaneously
- Weighs only 850 grams and can be securely attached to a belt
- Images and clips saved directly on your phone or tablet

Applications

- Abdominal
- Gynecologic
- Non-reproduction

Related features

CFM (Colour Flow Mapping) exclusive to Easi-Scan:Go

- Negative pregnancy diagnosis from 14 days after AI
- Foetus viability confirmation (heart)
- Recipients mares for embryo transfer purpose .
- Confirmation of dominant follicle pre ovulatory
- Twin pregnancy check



Calving gown

With its long fitted sleeves and back cutouts, this gown is designed to be very strong and offer good protection. Available in two lengths.

References

Green:	Clear:
024265 - 140cm	025588 - 140cm
024263 - 155cm	025586 - 155cm



Overboot

Polyethylene overboots with 43x53 cm double elastics for heavy-duty use.

Reference

024242 - Overboot





Sterile Polytactyl glove

Individually-packaged sterile glove designed to be used during all stages of equine embryo transfer. 2 sizes available.

Polysem's sterile Polytactyl glove provides comfortable wear and very good protection for procedures.

Thickness 33 μ - 92 cm - Size M - L - Yellow color

Reference

025471 - Sterile Polytactyl glove - Size M

024227 - Sterile Polytactyl glove - Size L



Copolymere



Perfectly designed for procedures requiring an excellent tactile touch and perfect accuracy (ultrasounds, palpitations, etc.).

Thickness 23 μ

References

027817 - Copolymere Clear glove 100 cm - with removable strip - Size S

024185 - Copolymere Clear glove 100 cm - with removable strip - Size M

024183 - Copolymere Clear glove 100 cm - with removable strip - Size L

027922 - Copolymere Clear glove 100 cm - with removable strip - Size XL



Super sensitive glove

A silky copolymer, full-length glove with excellent tactile sensitivity. Preferred for high accuracy tasks such as reproduction ultrasonography.

Thickness 24 μ

Reference

024761 - Super-sensitive clear glove with grip attachment 1M





Vetorange range



Vetorange Soft:

Precision and durability meet in Vetorange Soft gloves, offering heightened sensitivity for delicate veterinary procedures, ensuring reliable performance for professionals who prioritize both precision and durability.

Thickness 24 μ - 92 cm - Size L

Vetorange Plus:

Vetorange Plus gloves provide exceptional resilience with a secure neck attachment, ensuring optimal glove retention during veterinary procedures, making them a reliable choice for high-performance tasks.

Thickness 30 μ - 100 cm - Size M - L

Vetorange Classic:

Balancing sensitivity and durability, Vetorange Classic gloves are versatile, offering robust resistance for everyday veterinary tasks, catering to diverse needs with reliable performance.

Thickness 28,5 μ - 92 cm - Size L



References

- 024194 - Vetorange
- 030135 - Vetorange Plus - Size M
- 027976 - Vetorange Plus - Size L
- 024197 - Vetorange soft

Green Air Gloves



The Green Air Glove has the Ok Compost Industrial certification, ultra-breathable glove.

Thickness 21 μ

Reference

- 026066 - Green Air Glove 92 cm - Size L



Missouri vagina

Soft leather artificial vagina for collecting stallion semen.

Includes 2 vials to collect semen, a double-wall liner, and a synthetic protection for the vagina.



Reference

025599 - Missouri vagina + leather + 2 vials + liner
+ similed-leath. + felt

Key benefits

Lightweight, easy-to-handle artificial vagina, gentle for sensitive stallions or those experienced with natural mating.

Accessories

025598 - Double-wall liner for Missouri vagina
007002 - Collection vial with cap for Missouri vagina
005158 - Synthetic leather protective sleeve for the Missouri vagina
005159 - Protective cover for the Missouri vagina
023917 - B-lube
025471 - Sterile Polyactyl glove - Size M
024227 - Sterile Polyactyl glove - Size L
019665 - sterile lubricant gel

Related products

024260 - Disposable liner for artificial vagina
005174 - Disposable liner without filter for Missouri vagina
005125 - Semen filter for vagina
026863 - Filters Ø 240 mm
025993 - 235 mm alcohol thermometer -10 / +110

INRA vagina

Sold with the vagina body, the inner and outer liner, a cone to hold the collection bottle and the elastic bands.

The detachable cone allows a single artificial vagina to be used for different sizes of stallions and to collect with the open vagina technique.

Since it is lightweight with double handles, the collector can easily hold it throughout the collection.

The universal filling nozzle allows technicians and vets to fill the vagina directly from a tap, eliminating the need for a separate nozzle connector.



Reference

021933 - INRA vagina body + inner & external liner + cone

Key benefits

Easy to clean and handle, enabling open-vagina semen collection.

Related products

006639 - Protective muff for INRA vagina
005644 - 177 ml whirl-pack

Accessories

021937 - INRA vagina body alone
005200 - Cone for INRA vagina
005177 - Outer liner for INRA vagina
005176 - Inner liner for INRA vagina
019265 - Liners for INRA vagina
023917 - B-lube
025471 - Sterile Polyactyl glove - Size M
024227 - Sterile Polyactyl glove - Size L
019665 - sterile lubricant gel
005134 - 100 mL glass bottle
017585 - Ready-to-use disposable liner for INRA vagina
026863 - Filters Ø 240 mm
024260 - Disposable liner for artificial vagina

Dummy mare

The first step of semen collection is one of the most important.

Best quality semen is often obtained when the stallion is ideally positioned on the dummy mare.

While designing the dummy, both the stallion's comfort and the safety needs of the handler were kept in mind.

Our very strong dummy mare is made of galvanized steel covered in leather and rubber. With a total weight of about 350 kg, it easily withstands the stallion's weight. Its height and angle can be adjusted to fit different breeds and shapes. Finally, it is easy to clean and disinfect between collections, ensuring perfect hygiene.

Reference

017553 - Dummy mare with transportation box

Key benefits

Possibility to change the semen collection side, based on your collection needs



Accessories

017554 - Rubber mat for dummy mare

Dummy mare for central collection

Adjustable dummy mare for central stallion semen collection, mounted on galvanized hydraulic monopod.



Reference

021927 - Dummy mare for central collection with transportation box

Accessories

017554 - Rubber mat for dummy mare



Stainless steel incubator 30-70°C

Incubator made of high quality stainless steel, to keep all the instruments used during the collection phase at the right temperature.

Key benefits

Ideal to keep artificial vaginas warm prior to collection.



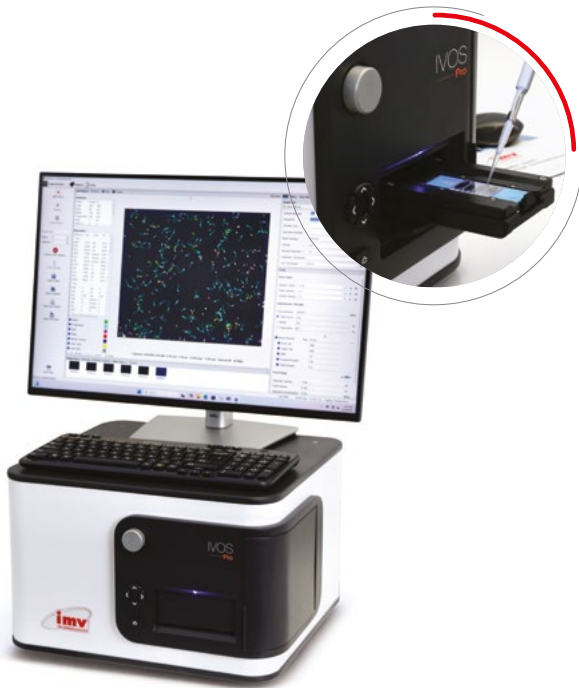
References

- 024930 - 53 l stainless steel incubator 30-70°C
- 024932 - 108 l stainless steel incubator 30-70°C
- 024933 - 256 l stainless steel incubator 30-70°C

NEW

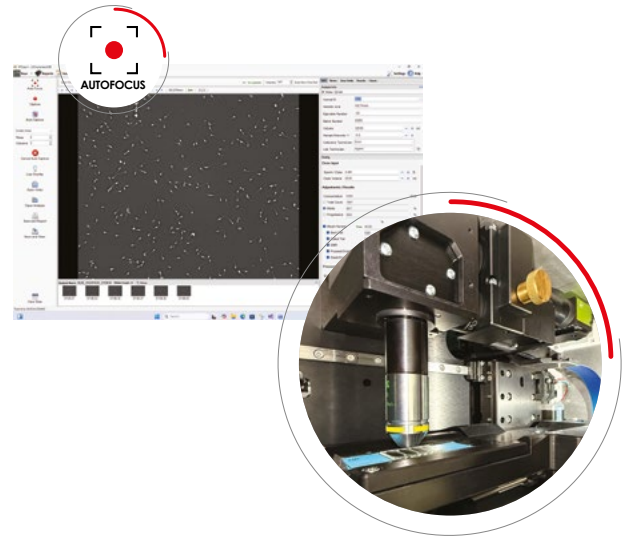
IVOS PRO

CASA system with unmatched accuracy for concentration, motility, morphology.



Key benefits

With IVOS Pro, streamline your operations by achieving maximum doses and quality through data accuracy and standardization powered by automation. You will significantly speed up your workflow and gain the valuable insights to optimize your stud management.



Reference

030230 - IVOS Pro

Related products

025107 - Leja 4 chambers slides

Accessories

- 025097 - Barcode reader for IVOS
- 022375 - HTB electronic scale for IVOS
- 005530 - Pipette P20 from 2 to 20 µl
- 005208 - Tips for pipette P20 and P200
- 028880 - Pipette P1000 from 100 µl to 1000 µl
- 028879 - Tips for Pipette P100
- 023726 - Microlab 600 dilutor

Maximize doses & ensure quality

- Standardize semen analysis with autofocus, auto-illumination, and auto-brightness features
- Maximize economic gains through fertility and dose optimization

Workflow speed up

- Unmatched speed and workflow efficiency with minimal clicks, maximum automation, rapid stage movement and more sperm per field
- Reliability and minimal downtime thanks to fixed, locked and standardized optics features
- System integration with auto data transfer, reducing human error and saving time for increased efficiency

Optimize your stud management with data-driven insights

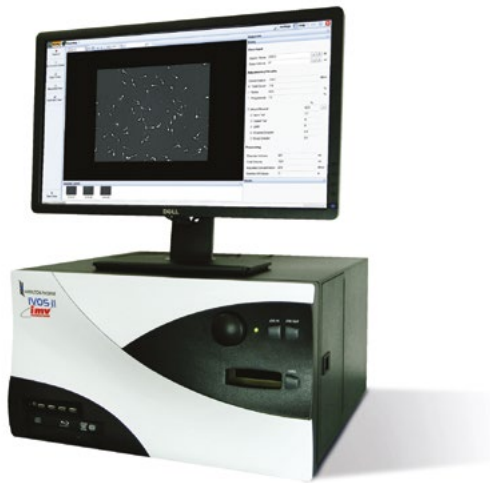
- Abnormality detection of spermatogenesis issues (as Indicators of Male Fertility Health) for better sperm quality
- Quick identification of health issues, heat stress, testicular degeneration problems, preventing compromised ejaculate from entering production and causing economic losses.



- Enhance data monitoring and efficiency with continuous, real-time monitoring of semen morphology quality
- Advanced abnormality analysis on different populations for higher accurate semen quality assessment

IVOS II Fluo

IVOS II Fluo is an integrated system with fluorescence for animal semen analysis, for both dose production and quality control evaluation.



Reference

028506 - IVOS II Fluo (fluorescence)

Accessories

025097 - Barcode reader for IVOS
022375 - HTB electronic scale for IVOS
025454 - Subpopulation creation software
025455 - Individual track data software
023726 - Microlab 600 dilutor
006452 - Mini pipette for semen sampling
025456 - Viability software
018441 - IDENT stain kit
018632 - Viability stain kit
028499 - HT morph for IVOS II Fluo

Key benefits

Quick and ease of use:

- «All-in-one» enclosed system
- Standardized procedures thanks to Leja 4 chambers
- Powerful and intuitive - highly configurable, automated heating stage
- Real-time data updating
- Fluorescence

Optimizes productivity and dose quality:

- Optimization of number of doses produced
- Automated morphology analyses
- Decision aid tool
- Data management and traceability
- Fluorescent capabilities



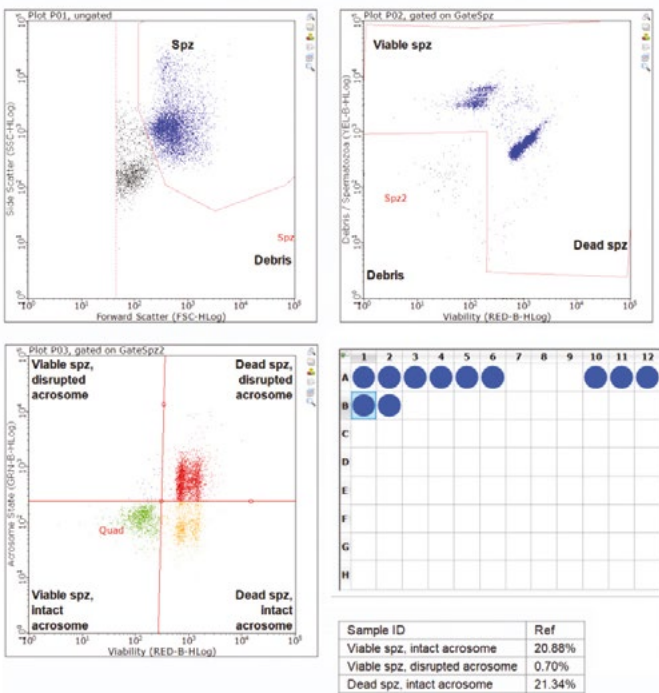
Related products

025107 - Leja 4 chambers slides - 20 µm
005530 - P20 Pipette (2 to 20 µl)
005208 - Translucid tips for pipette P200 and P20
005531 - P200 pipette (50 to 200 µl)
028877 - Boxes of 96 tips for P20 P200
028880 - P1000 pipette (100 to 1000 µl)
028878 - Boxes of 96 tips for P1000
028879 - Tips for Pipette P1000 (X1000)
005529 - P5000 pipette (1 to 5 mL)
005206 - Translucid tips for pipette type P5000
023639 - Multi pipette plus
023640 - Combitips for Multipipette
024504 - Dry water bath
021922 - Accu-beads
020100 - Filter P5000
005555 - Carousel stand for pipettes
026897 - CITO thawer 12/220V
013764 - Tube stand
030369 - Thermobloc-tubes
023941 - 40-tube histological stage
018714 - Vortex tubes stirrer
014175 - Set of permanent black pens for LN2
021768 - 1.5 ml microtubes

EasyCyte

Thanks to its innovating patented microcapillary system, EasyCyte is easier to use than traditional flow cytometers and reduces the size of the samples and the space needed.

EasyKit Viability and Assess Membrane



References

- 022841 - EasyCyte II Plus with IMV software
- 022843 - EasyCyte II Mini with IMV software

Related products

- 021773 - Multichannel pipette
- 021774 - Tips for multichannel pipette
- 021775 - Micropipette container
- 021776 - Pipette P2 (0,2 to 2µl)
- 021776 - Pipette P2 from 0,1 to 2 µl
- 021777 - Translucid tips for pipette P2
- 005530 - Pipette P20 from (2 to 20 µl)
- 005208 - Translucid tips for pipette P20 and P200
- 005531 - P200 pipette (50 to 200 µl)
- 005529 - Pipette P5000 from (1 to 5 mL)
- 005206 - Translucid tips for pipette P5000
- 005555 - Carousel stand for pipettes
- 020101 - Tips for micropipette MP50
- 005928 - Adjustable micropipette 5/50 µl
- 020100 - Filters for MP5000

Key benefits

- Unique ready-to-use flow cytometer dedicated to semen analysis
- Intuitive software package for semen analysis
- Scientific technical support
- Easy-to-use technology
- EasyKit: ready-to-use flow cytometry assays for time-saving and repeatable results

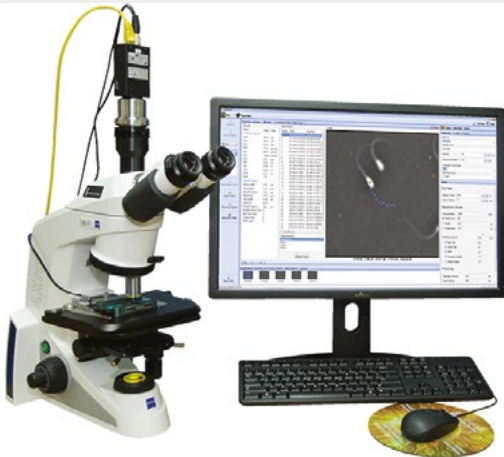


Accessories

- 024708 - EasyKit - Viability and concentration
- 024864 - EasyKit - Mitochondrial activity
- 025157 - EasyKit - Molecule D oxidation
- 025293 - Easykit - acrosome integrity and viability
- 025402 - EasyKit - Bacterial concentration
- 025563 - Filter for EasyKit bacterial count kit
- 024760 - EasyClean
- 025438 - EasyBuffer C
- 022845 - «Flow Cell» capillary for EasyCyte II Plus
- 022846 - «Flow Cell» capillary for EasyCyte II Mini
- 023066 - EasyCyte Check Kit
- 021772 - Grenier plate with 96 wells
- 021771 - 500 µL microtubes
- 021768 - 1.5 ml microtubes
- 021767 - «Flow Cell» Washing kit
- 014175 - Set of permanent black pens for LN2
- 021567 - Centrifuge with swinging holders

CEROS II

Providing the same semen analysis accuracy as the IVOS range, the CEROS II CASA system is a cost-effective alternative. Because the CEROS II processor is a separate unit from the optical component, the computer can be placed under the bench and at a distance.



References

024905 - CEROS II

Accessories

025107 - Leja 4 chambers slides
025454 - Subpopulation creation
025455 - Individual track data
023726 - Microlab 600 dilutor
026691 - Footswitch for CEROS II
020100 - Filters for MP5000
005206 - Translucid tips for pipette type P5000
021768 - 1.5 ml microtubes
005529 - P5000 pipette (1 to 5 mL)
005531 - P200 pipette (50 to 200 µl)
005208 - Translucid tips for pipette P20 and P200
005530 - P20 Pipette (2 to 20 µl)
005529 - Pipette P5000 from (1 to 5 mL)
005206 - Translucid tips for pipette P5000
005555 - Carousel stand for pipettes
020101 - Tips for micropipette MP50
005928 - Adjustable micropipette 5/50 µl
020100 - Filters for MP5000

Trinocular Microscope

Microscopic analysis is the first step in semen analysis. With a microscope, laboratories can analyze gross and individual motility.

Microscope with heating stage.



References

024374 - Trinocular Microscope - With phase contrast and lens plan

Accessories

016513 - 36 cm monitor with color camera
030369 - Thermobloc - Tubes TDB-120, A-103
005530 - Pipette P20 from 2 to 20 µl
005208 - Tips for pipette P20 and P200
005795 - Slides 76X26
005760 - Cover slides 22X22
030356 - Cover slides 18x18
017840 - 8ml flask immersion oil for microscope
005671 - Hand counter
005786 - Thoma cell

AccuCell photometer

Photometer developed specifically for accurate measurement of ejaculate concentration.

Several modes:

- concentration
- concentration, calculation of the volume of media and the number of doses
- quality control with filter standards



References

014435 - AccuCell equine photometer

Accessories

- 006452 - Mini pipette for semen sampling
- 014441 - Printer with a cable for Accucell photometer
- 023726 - Equine dilutor
- 028515 - Paper roll for photometers
- 005378 - Photometer printer paper roll
- 015988 - 002259 - 9/1000 NaCl solution
- 005155 - Cuvettes for photometer
- 005376 - Standard filters for photometers
- 005531 - P200 pipette (50 to 200µl)
- 028877 - Boxes of 96 tips for P20 P200
- 005529 - P5000 pipette (1 to 5ml)
- 005206 - Translucid tips for pipette type P5000
- 020100 - Filter P5000
- 005555 - Carousel stand for pipettes

NEW

CellPro

Photometer developed especially for accurate measurement of the concentration of ejaculates.

Reference

030247 - equine photometer

Accessories

- 005529 - P5000 pipette (1 to 5ml)
- 005206 - Translucid tips for pipette type P5000
- 020100 - Filters for MP5000 micropipette
- 005531 - P200 pipette (50 to 200µl)
- 005208 - Tips for pipette P20 and P200
- 005928 - Adjustable micropipette MP50 from 5 to 50 µl with 1000 clear tips
- 005555 - Rack for 7 micropipettes
- 006452 - Mini pipette for semen sampling
- 023726 - Microlab 600 dilutor
- 028877 - Boxes of 96 tips for P20 P200



Dilutor - Microlab 600

Tool developed especially for accurate measurement of the concentration of ejaculates.



Reference

023726 - Equine dilutor

Key benefits

- Enhanced accuracy & precision: Customized Hamilton dilutor ensures $\pm 1\%$ accuracy and $\pm 0.2\%$ precision
- Optimized semen preparation: Improves sample consistency for more reliable semen analysis
- Proven superiority: Comparative analysis shows the dilutor outperforms pipettes in accuracy and repeatability
- Dedicated hardware & protocols: Specifically designed for semen sample preparation with multiple protocols
- Multilingual software: Available in English, Français, Italiano, Português, Español, Deutsch...
- Versatile use: Adaptable for various animal species

Manual counting (hemacytometer)

References

005671 - Manual counter

Accessories

005786 - Thoma cell, double squaring

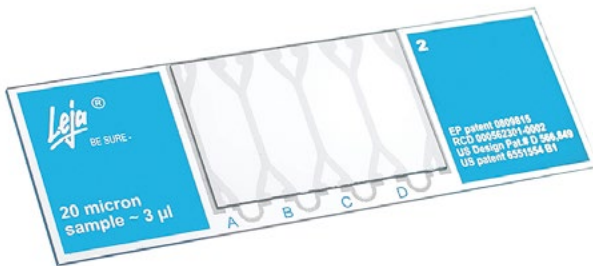
020105 - Planed slides 22x22 mm (per 2x10)

017840 - 8ml flask immersion oil for microscope



Leja slide

Leja 4 chambers are the most accurate fixed-depth slides on the market. Leja calibrated slides provide the accuracy and precision needed to reliably analyze semen. Leja 4 chambers facilitate analyses standardization.



Key benefits

- Ensure fixed-depth chambers: availability of a Certificate of Analysis for each batch number
- High-tech materials and rigorous industrial processes: control of the raw materials used and best process used to ensure reliable analyses
- Reliability: controlled filling of chambers
- Accuracy and reliability of semen analyses
- Standardization of analyses
- Repeatable and objective measures
- Inspection and tracking of raw materials, toxicity checks, depth checks, 18-point visual inspection
- Easy-to-use slides

References

- 025107 - Leja 4 chambers slides
- 025108 - Leja 8 chambers slides
- 025095 - 8 chambers warming stage for IVOS II only



INRA 96

Equine semen extender and preservation media for fresh and cooled equine semen.

Based on microfiltration technology, **INRA 96 ensures the selection of only high-quality components from milk**, which is essential for optimal preservation of semen quality. As it is an industrialized process, it guarantees strong consistency in terms of quality from batch to batch.

Considering the high sensitivity of stallion semen and the high genetic and financial value of breeding stallions, each produced batch is systematically tested on equine semen through a partner located close to our production facility. The product is **evaluated under real in vitro conditions** using a CASA system, allowing us to monitor motility parameters and ensure product consistency and performance.

INRA 96 was developed in 1996 by the renowned INRA in France. Since then, INRA 96 has gained worldwide recognition due to its high quality and the strong industrialization and quality control processes implemented by IMV Technologies to guarantee consistent performance. Numerous publications have demonstrated its superiority in both in vitro and in vivo results (e.g., Batellier et al., 2001; Lefranc et al., 2010; Fedorka et al., 2014; Řecková et al., 2022).

Two protocols are possible depending on the stallion profile: storage at 4°C under anaerobic conditions for good coolers, and storage at 15°C under aerobic conditions for more sensitive stallions. Thanks to this flexibility, INRA 96 is highly adaptable to a wide range of stallions.

It is available in a ready-to-use bottle format, which saves time and avoids errors linked to extender reconstitution, such as issues related to poor water quality.



Key benefits

Leading semen extender and preservation media in the industry, INRA 96 maintains fertility potential of equine semen for up to 48 hours.

- Sterile and ready-to-use
- Formulated with fractions of milk micellar proteins, which are highly protective to sperm cells.
- Proven to work for preservation of equine semen at 15 degrees Celsius, and 4 degrees Celsius.
- Recognized for its ability to protect the ejaculates of even the most difficult stallions.

It contains antibiotics (penicillin and gentamicin) and a fungicide (amphotericin B).

References

016441 - 200 ml media for equine fresh semen

022110 - INRAFREEZE equine semen freezing pack

022330 - INRAFREEZE equine semen freezing basic pack

019269 - MAXIFREEZE centrifugation cushion 100 ml

4200g electronic balance

Reference

022375 - 4200 gr electronic balance

Key benefits

- 4200 gr capacity
- 0.1 gr accuracy
- With RS232



30L Water bath

30 L water bath with heating circulator and a stand for baby bottles and tubes.



References

007227 - 30 L water bath

029331 - 17 liters water bath stainless steel with cover

Key benefits

- Optimal Temperature Control: Maintains extender, semen, and extended semen at the ideal temperature during dilution
- Durable & Hygienic: Made of stainless steel for long-lasting use
- Fully Equipped: Includes a heating circulator and a stand for baby bottles and tubes

Accessories

008325 - Holder for 16 bottles

020177 - 220 mL Pyrex bottle

45L water bath

45 L Stainless steel water bath with lid.

Reference

005727 - 45L water bath



Accessories

020177 - 240 mL Pyrex bottle

Glassware



References

- 005874 - 100 ml graduated Pyrex test tube
- 005876 - 10 ml 1/10 graduated Pyrex pipette
- 005916 - 2 liter Pyrex Erlenmeyer large opening
- 005739 - Distillateur en verre 7 litres/heure

EXTENDER CENTRIFUGE

References

- 021567 - Centrifuge with rotor - 6 holders 50 ml



Accessorie

- 020102 - Sterile tubes with plug - 50 ml (per 50)
- 015609 - Red holder for 3x3 tubes 50 ml
- 013764 - Tube stand

Stainless steel hot air sterilizer

Stainless steel sterilizer: 30C° to 220C°.



Key benefits

- Sterilizes laboratory instruments and containers by destroying highly resistant microorganisms.
- The Memmert C hot air sterilizer features a SetpointWAIT function, that ensures that the program continues only when the setpoint temperature is reached. The precise maintenance of the sterilization time and the complete killing off of highly resistant microorganisms are guaranteed at all times, irrespective of the sterilization load and the stainless steel chamber volume.

References

024931 - 53 l stainless steel sterilizer 220°C internal dimensions 400*400*330
005732 - 108 L stainless steel sterilizer 220°C internal dimensions 560*480*400
005736 - 256 L stainless steel sterilizer 220°C internal dimensions 800*640*500



IRIS Compact

IRIS Compact offers a wide range of printing options, allowing you to print straws and rods with unique field type, barcode, and logos. With IRIS, all laboratories can have access to traceability with a low cost of ownership.

References

- 029470 - IRIS Compact
- 028763 - Medium Hopper
- 029140 - Ink Solvent emission aspiration/filtration system



IRIS Standard

IRIS Standard offers a wide range of printing options, allowing you to print straws and rods with unique field type, barcode, and logos. With IRIS, all laboratories can have access to traceability. lid



References

- 028865 - IRIS Standard
- 028763 - Medium Hopper
- 029140 - Ink Solvent emission aspiration/filtration system

Key benefits

FAST AND RELIABLE

- High speed printing 18,000 straws/hr
- Anti-jamming system

ULTRA-COMPACT INKJET

- No daily cleaning
- Easy to use
- Print easily on Straws and Identification rods

INTUITIVE AND CONNECTED CONTROL

- Supervision software
- Reliable counting of straws and identification rods



ISevo V2 alpha Flex

Designed for optimum flexibility and safety, rely on ISevo alpha Flex for the entire semen packaging process, compatible with any type of straw!

Benefit from the alpha mode and its automated plug moisture level control for alpha straw, or turn it off to use any other semen straw.



References

- 030070 - ISevo V2 Alpha Flex medium non integrated 110V
- 030069 - ISevo V2 Alpha Flex medium integrated 220v with jet printer
- 030066 - ISevo V2 Alpha Flex medium integrated 220v without jet printer
- 030065 - ISevo V2 Alpha Flex medium non integrated 220V

Accessories

- 030048 - Semen cone
- 005564 - 017484 - 007329 - Flexible tube for semen filling
- 028468 - Premium tightness plug
- 007705 - Medium short suction nozzle
- 007703 - Medium long filling nozzle

Key benefits

- Optimum security and reliability
- Time saving: Up to 12,500 straws per hour
- Efficient filling and sealing
- Absorb less semen
- Smart ergonomics to improve user comfort and reaction speed
- Unique traceability and safety system

Efficient and optimized filling, sealing and/or printing

Engineered for precision, speed and safety, ISevo V2 range ensures seamless filling, sealing and/or printing of semen straws. Its optimized range minimizes waste and maximizes output, delivering consistent results with every cycle. ISevo V2 range is a monolithic multi-purpose machine which handle the filling of different species like Bovine, Equine, Ovine and Aquaculture. Isevo V2 range can be available with integrated system.

Built to withstand time, offering reliability and easy day-to-day maintenance

Isevo V2 range, designed for filling, sealing and or printing semen straws, ensures long-term reliability with its robust construction. Its user-friendly design allows for quick, hassle-free daily maintenance, keeping your operations smooth and efficient.

Advanced traceability for semen doses

Ensuring full traceability is essential in modern semen collection center, and this machine is designed to meet that need with precision and efficiency. Integrated with the IIS supervision software, it provides real-time monitoring and comprehensive batch tracking.

Switch to safe mode

ISevo V2 Alpha FLEX is a commitment. The commitment of working safely and quickly, in total confidence and silence. This concept blends leading-edge technology and intelligence, ensuring the perfect filling of each straw.





ISevo V2

ISevo V2 is newest filling and sealing machine designed for multi species purpose. The ISevo machine is an automated solution designed to fill semen straws with precision and efficiency.

It offers several key advantages: time saving, peace of mind through reliable operations, advanced traceability, detection of properly filled straws, as well as efficient filling and sealing. Its smart ergonomics make it user-friendly, streamlining the entire process for better security and ease of use.



Key benefits

- Semi-real-time alpha detection for up to 16 alpha straws colors.
- Large semen cone with a 200 ml capacity.
- New designed and efficient supervision software.
- Datamatrix printing capability.
- Single "all-in-one" machine
- Viscous media compatibility.
- Easy to clean
- Unique traceability

Accessories

- 030048 - Semen cone
- 005564 - 017484 - 007329 - Flexible tube for semen filling
- 028468 - Premium tightness plug
- 007705 - Medium short suction nozzle
- 007703 - Medium long filling nozzle
- 025352 - Disposable filling nozzle
- 026544 - Disposable filling nozzle holder
- 027838 - Reusable filling nozzle holder

References

- 030068 - ISEVO V2 MEDIUM NON INTEGRATED 110V
- 030061 - ISevo V2 medium integrated 220V with jet printer
- 030071 - ISevo V2 medium integrated 220v without jet printer
- 030059 - ISevo V2 medium non integrated 220V



GENOM'X

To meet the most technical needs, IMV Technologies has engineered GENOM'X™, a machine able to avoid semen waste and customize the straw filling process.

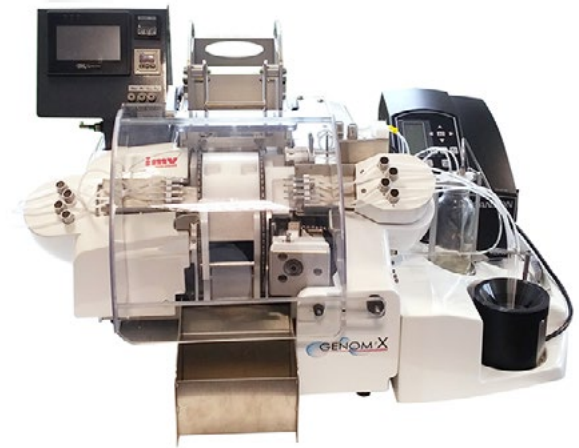
Straw filling and sealing machine - 0% absorption for mini and medium straws

Reference

023845- GENOM'X

Related products

Classic IMV straws



Accessories

- 023664 - Pressurizing tube GENOM'X
- 023712 - Sinker needle for 0%
- 023713 - Needle 0% length 22 mm
- 023714 - Needle 0% length 24 mm
- 023715 - Needle 0% length 26 mm
- 023716 - Needle 0% length 28mm
- 023718 - 2 way filling needle holder for 0%
- 023665 - Silicone tube 0% (per 6)
- 023668 - Straws receptacle 0%
- 007703 - Medium long filling nozzle
- 007705 - Medium short suction nozzle
- 030048 - Semen cone 200 ml
- 007329 - Suction flexible tube - 450 mm
- 028468 - Premium tightness plug
- 023667 - Filled straws hopper GENOM'X
- 023670 - Medium straws hopper GENOM'X



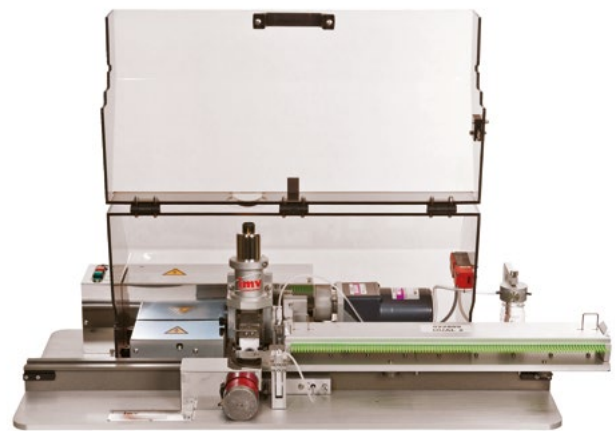
MRS1 Dual

The 1x1 straw filling and sealing machine made for small or mobile laboratories and customized productions.



Key benefits

- Reliable and easy to operate
- Possibility to pre-set the number of straws to fill on the rack
- Automatic transfer of filled straws to the freeze racks
- Fills and seals up to 3,600 straws per hour
- Works both at +4°C and room temperature



References

022990 - MRS1 Dual v2 115 V

022989 - MRS1 Dual v2 230 V

Related products

Top Bull Straws

022887 - 100 mini straws carrier for MRS1 V2

022888 - 58 mini straws carrier for MRS1 V2

022889 - 100 medium straws carrier for MRS1 V2

Accessories

007006 - Suction pump and filter (included with 022989)

007825 - MRS pump connection tube (per 2) (included with 022989)

022889 - 100 medium straws carrier for MRS1 V2

022890 - 58 medium straws carrier for MRS1 V2

022891 - 40 medium straws carrier for MRS1 V2

000012 - Joint white rubber (per 5,5 meters)

007703 - Medium long filling nozzle

007705 - Medium short suction nozzle

005564 - Flexible tube for semen filling (per 20x60)

006451 - Semen sampling medium tube (per 1 000)

030048 - Semen cone 200 ml

028468 - Premium tightness plug



Manual filling and sealing

Used to fill semen straws manually

References

007116 - Bubbler holder

007008 - Clip for 15 medium straws 0,5 ml

007297 - Filling nozzle with 15-pin suction cap 0.5 mL

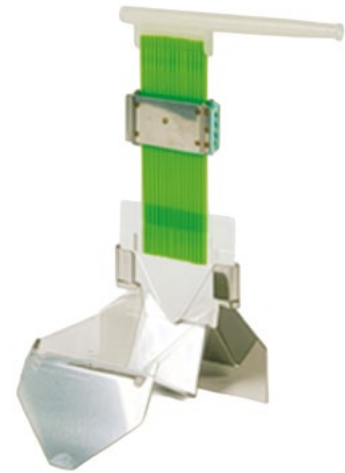
Related products

Straws

022887 - 100 mini straws carrier for MRS1 V2

022888 - 58 mini straws carrier for MRS1 V2

022889 - 100 medium straws carrier for MRS1 V2





alpha straw

The Alpha straw is the latest technology in semen straws. It ensures correct filling of the straw, enhancing the safety of the dose.

Once the straw plug reaches the appropriate level of moisture, the straw plug will fluoresce to indicate that a quality seal has been achieved.

The Alpha straw helps to prevent potential losses during thawing.

Its colored plug turns fluorescent when correctly moistened, enabling automatic and / or visual control of the plug's moisture level.

Automatic control of the plug moisture level (when used with ISevo Alpha machine)

MORE COMFORT, MORE SECURITY

When a straw is poorly sealed, it may explode during thawing and becomes thus unusable. The immediate advantage of the Alpha straw is to reduce, thanks to a simple visual control, the number of straws potentially compromised during thawing.

GAIN IN PRODUCTIVITY AND RELIABILITY

Used in conjunction with the ISevo Alpha filling and sealing machine, the Alpha straw allows automatic control of the plug filling. If the machine does not detect fluorescence, it pauses and alerts the user.



References

Medium Alpha Straws

- 028285 - Clear
- 028286 - White
- 028284 - Pastel Pistachio
- 028493 - Pastel Yellow
- 028496 - Pastel Red
- 028497 - Pastel Grey

Classic straw

Original straw created by our founder Robert Cassou in 1963, never equaled in terms of reliability.



References

- | | |
|------------------------|---------------------------|
| Classic medium straws | 005712 - Pink |
| 005569 - Clear | 005702 - Red |
| 005698 - Pastel gray | 005697 - Pastel blue |
| 005707 - Yellow | 005703 - Purple |
| 005590 - Pastel yellow | 020201 - Pastel pistachio |
| 005711 - Putty | 005568 - Green* |
| 005685 - Pastel orange | 005710 - Pastel green* |
| 005715 - Salmon | 005746 - Pistachio green |
| 005709 - Pastel red | |

* Non readable bar code



Vertical Cold Cabinet

This vertical cold cabinet is designed for an easy access thanks to front loading: its ergonomic design improves the user's working comfort.

Reference

018544 - Vertical cold cabinet



Horizontal Cold Cabinet

The IMV Technologies horizontal cold cabinet is a customized refrigerated workspace for frozen semen straw production laboratories. The worktable can be used to house the straw filling and sealing system, or for the equilibration of straws.

References

028571 - Horizontal cold cabinet 220V/50 Hz Height 2M

028570 - Horizontal cold cabinet 110V/60 Hz Height 2M: US market



Digitcool alpha

Controlled rate Straw freezer designed for a precise and uniform semen straw freezing. The Digitcool alpha human-centered features ease daily operations in laboratories.



Key benefits

- Designed to preserve the integrity of gametes during freezing
- Zero frigorific loss and optimized nitrogen consumption
- Aeronautics technology connectors
- Controlled deep freezing
- Enhances your Standard Operating Procedures
- Fully programmable and easy to disinfect



Reference

029126 - Digitcool alpha

Related products

- 029138 - Starter pack Medium Digitcool alpha
- 028480 - Freezing rack for 100 medium straws for Digitcool alpha
- 029132 - Distribution block for 100 medium straws for Digitcool alpha
- 029135 - Pack of 1 straw collector + 10 dividers medium
- 028959 - UPS Digitcool alpha 1500VA / 1050W
- 020279 - Cryogenics gloves by pair
- 020278 - Safety glasses
- 028551 - 230 L tank with Flexible + Caster + Gauge

HOMOGENEOUS FREEZING

Thermodynamic principles have been meticulously respected to preserve the integrity of the same in every corner of the container.

COMFORT USAGE AND OPERATOR SAFETY

- Hands-free opening of the lid
- Safer for the user
- Eliminates liquid nitrogen-derived injuries

TIME SAVING

- Easy and semi-automated straw alignment within the racks
- Production batch visibility at a glance with the batch separator
- Specially designed straw collector

PEACE OF MIND

Even if you lose electrical power, a UPS battery backup system keeps the Digitcool alpha running long enough to safely perform its freezing cycle

Mini Digitcool

Mini-Digitcool is a more compact version of Digitcool with the same benefits. Mini-Digitcool freezer is used to freeze straws on 24 racks.

Reference

007263 - Mini-Digitcool



Accessories

007118 - Freezing rack for 58 medium straws
007092 - Distribution block for 58 medium straws
030162 - 70 l tank AC70 + Flexible + Hose
029416 - 150 l tank Apollo
028551 - 230 l Tank with Flexible + Casters + Gauge

Micro Digitcool

Micro-Digitcool is the smallest digitcool while keeping the same benefits. Micro-Digitcool freezer is used to freeze straws on 6 racks.

Reference

007261 - Micro-Digitcool



Accessories

007119 - Freezing rack for 40 medium straws
007093 - Distribution block for 40 medium straws
030162 - 70 l tank AC70 + Flexible + Hose
029416 - 150 l tank Apollo
028551 - 230 l Tank with Flexible + Casters + Gauge

026069 - Supervision Software WIN3T V2
007186 - Wire RS232 for PC connection (included with 007261/62/63)
026924 - Short forceps length 23 cm
026925 - Long forceps length 110 cm
024121 - Straw gathering forceps
020279 - Cryogenic Gloves by pair
020278 - Safety glasses



MCM

The MCM is a manual counting machine designed to package and count frozen straws in visotubes.

This equipment is specially designed to divide small batches of straws in visotubes.

References

007098 - Manual counting machine - MCM For visotubes diameter 10 mm (10 mini straws or 5 medium straws)

007095 - Manual counting machine - MCM For visotubes diameter 13 mm (25 mini straws or 10 medium straws)



Accessories

007826 - 010998 - 010975 - Counting slide for MCM

Containers

References

- 017411 - Container 3 liters - 6 canisters - 1 level - ø 50 mm
- 005227 - Container 35 liters - 6 canisters - 2 levels - ø 65 mm
- 015078 - Lifter 2 levels
- 005228 - Container 40 liters - 10 canisters - 2 levels - ø 73 mm
- 024505 - Container Arpege 75 - 72 Liters - 21 canisters - 4 levels
- 028832 - Container 420 l - 110 canisters - 4 levels
- 019649 - Dry shipper 5L-2canisters-4 goblets 35mm
- 016432 - Dry shipper 12L-2canisters-4 goblets 65mm
- 019649 - Dry shipper 5L-2canisters-4 goblets 35mm
- 016432 - Dry shipper 12L-2canisters-4 goblets 65mm
- 016073 - Nitrogen transporter TR 11
- 017434 - Nitrogen transporter TR 100





Visotubes

Hexagonal visotubes have an original shape which can fit into our 35 mm and 65 mm goblets.

1 hexagonal visotube can contain 80 mini straws or 36 medium straws.

7 hexagonal visotubes can be inserted into a 65 mm goblet

Polygonal visotube are designed to fit perfectly the shape of our 65 mm and 35 mm goblets.

1 polygonal visotube can contain 30 mini straws or 15 medium straws.

15 polygonal visotubes can be put into a 65 mm goblet, and 4 can be put into a 35 mm goblet.

Round visotube

The 10 mm visotube can hold up to 12 mini straws or 5 medium straws.

Eight 10 mm visotubes can be put into a 35 mm goblet.



References

Hexagonal visotubes	Polygonal visotubes	Round visotubes				
006875 - White	006401 - White	7.1 mm	9.2 mm	10 mm	12 mm	13 mm
006338 - Red	006619 - Orange	006658 - White	006421 - White	005561 - White	006677 - White	006420 - White
006394 - Green	006620 - Blue	006441 - Red	006390 - Green	006422 - Blue	006695 - Yellow	006404 - Red
006409 - Blue	006622 - Red	006659 - Green	006400 - Blue	006402 - Yellow	006683 - Orange	006413 - Green
006414 - Yellow	006623 - Green	006399 - Blue	006423 - Yellow	006673 - Orange	006408 - Red	006395 - Blue
006405 - Orange	006624 - Yellow	006412 - Yellow	006667 - Orange	006672 - Pistachio	006679 - Green	006411 - Yellow
		006662 - Orange	006668 - Red	006403 - Pink	006678 - Blue	006689 - Orange
		006661 - Purple		006392 - Red		
		006407 - Pistachio		006406 - Green		

Gobelets

Goblets are used for the storage with visotubes containing semen straws in a liquid nitrogen tank.

References

006418 - Goblet diameter 65 mm white	006934 - Goblet diameter 35 mm
006397 - Goblet diameter 65 mm red	006915 - Goblet diameter 42 mm
006754 - Goblet diameter 65 mm green	006913 - Goblet diameter 53 mm
006755 - Goblet diameter 65 mm blue	
006757 - Goblet diameter 65 mm purple	
006756 - Goblet diameter 65 mm yellow	
006753 - Goblet diameter 65 mm pistachio	
006321 - Perforated white cover h.70mm for goblet d.65mm	





Canisters flags

Identifiers and flags can be seen easily from above the tank and are generally used to identify goblets.

References

007328 - White	015697 - Turquoise
015693 - Yellow	015698 - Orange
015694 - Salmon	015699 - Violet
015695 - Pink	015700 - Red
015696 - Dark green	015706 - Gray
007145 - Identifier without flag	



Canisters

Canisters are designed to hold goblets in the LN2 tank. Different heights of canisters are available, with a capacity of between 2 and 6 goblets.

References

018342 - 2-level canister
018341 - 3-level canister
018340 - 4-level canister
018339 - 5-level canister
018127 - 6-level canister



Related products

026924 - Short forceps length 23 cm
026925 - Long forceps length 110 cm

Medium identification rods

A solution is available for straw identification, Rods :

Rods are printable (max 135 characters and barcodes) and are easily noticeable since they are longer than straws. They are most often used to identify visotubes.

References

006762 - white	006331 - yellow
006763 - red	006876 - pink
006774 - grey	006775 - orange





ECOOL Box

The eCOOL disposable equine semen shipping box is IMV Technologies' «green» alternative to the traditional equine semen shipping box. Light weight and made of 100% recycled outer material. Performs like a traditional reusable shipper, protecting semen motility for up to 48 hours.

Contains two temperature-regulating blocks, two 20 mL, sterile, disposable syringes and Luer-lock adaptors. Fully contained, secure and green!

Reference

028784 - ECOOL Box



Related products

005644 - 177 ml whirl-pack



CITO Thawer

Cito thawer used to thaw straws at the ideal temperature, without damaging them.

Reference

026897 - CITO thawer 12/220V



Accessories

- 018255 - Thermometer for CITO thawer -
- 005940 - Holder for 20 tubes ø 20 mm
- 026923 - Tweezers for technician length 14 cm
- 005727 - Water bath with lid
- 020111 - Sterile 10 mL tubes
- 005233 - Straw cutter



70 cm sterile swab for mares

Swab used to take deep cervical samples.

Reference

007393 - 745 mm sterile swab for mares (per 50)



Disposable speculum

Reference

005610 - Disposable speculum length 450 mm (per 20)



Lumistyl lighting for Rilsan speculum

References

007187 - Lighting for speculum

001495 - Bubbler of 2 lamps for Lumistyl





Equine sterile AI catheter

Multifunctional sterile catheter (76cm) for insemination in the uterine horn



Reference

007356 - Equine sterile AI catheter

Key benefits

- Increased flexibility facilitates navigation through the mare's uterus, eliminating concern of damage
- Each catheter is individually wrapped and gamma sterilized with a sanitary overshooth
- A secure silicon connectore ensures a tight seal with a variety of syringes
- Transparent catheter: easy to see semen inside

Related products

- 029052 - Syringe 20ml
- 016065 - Aspitem disposable device to fill syringes
- 006458 - Roll of 60 sanitary sheath 610 mm
- 019665 - OB LUBE sterile gel
- 025471 - Sterile Polyactyl glove - Size M
- 024227 - Sterile Polyactyl glove - Size L



Catheter for equine deep A.I.

815 mm long catheter with atraumatic ball, for inserting into the uterine horns.



Reference

019839 - Catheter for equine deep A.I.

Key benefits

- Each catheter is individually rapped and gamma sterilized with a sanitary overshooth.
- A secure silicone connector ensures a tight seal with a variety of syringes, can also be used with 0,5ml straws.
- Ergonomic profile: will help to slide smoothly against the endometrium.
- The longest on the market for deep insemination in large size mares.

Accessories

- 019892 - Stylet for equine I.U.I. catheter
- 019665 - Sterile lubricant gel
- 025471 - Sterile Polyactyl glove - Size M
- 024227 - Sterile Polyactyl glove - Size L



ExaPad range

Our full ExaPad range is designed with the mixed practice vet in mind suitable for both routine work and advanced applications.



Key benefits

ExaPad

Seamlessly switch between applications with 2 probe connectors

- Large imaging viewing area
- Excellent image quality

ExaPad Mini

- Suitable for in practice or in field use
- Excellent imaging for OPU application
- Software integrations with MeatQText and EcoText

ExaPad Micro

- Compact and portable scanner
- Purposely designed accessories to support you in any use-case
- Ruggedised machine with magnesium casing and veterinary tested probes

Applications

Our Exapad range covers all applications, with each model optimized for specific features.

- Applications covered: Abdominal, Musculoskeletal, Gynecologic, OPU, Cardiology, Orthopedic, Ophthalmology
- Model focus:
 - Micro: Reproductive & Musculoskeletal Level 1
 - Mini: Reproductive & Musculoskeletal Level 2
 - Exapad: Musculoskeletal Level 3

References

- 90-3346KIT - ExaPad Veterinary ultrasound scanner
- 90-2440KIT - ExaPad Mini veterinary ultrasound scanner
- 903188 - ExaPad Micro veterinary ultrasound scanner

Related features

Teamviewer: Equipped with Teamviewer to allow for remote support on the device. Allowing you to have access to technical and clinical experts should you have any difficulty whilst imaging

CFM (Colour Flow Mapping) for:

- Negative pregnancy diagnosis from 12 days after AI
- Foetus viability confirmation (heart)
- Recipients mares for embryo transfer purpose .
- Confirmation of dominant follicle pre ovulatory
- Twin pregnancy check





ExaPad range

Probe compatibility

Product	ExaPad	Mini	Micro
 LR760V - Linear Rectal	X	X	X
 CRV460V - Curved rectal probe	X	X	X
 L738V- Linear Tendon	X	X	X
 C360S - Convex	X	X	X
 OPU E610B - OPU, thin probe	X	X	X
 OPU E614B - OPU, thicker probe	X	X	X
 C614P - Micro-convex probe	X	X	X
 P320R - Phased array probe	X	X	
 P713R - Phased array probe	X	X	
 CC717B - Micro-convex probe	X		
 CC550V - Convex probe	X		
 LC1038V - Linear probe	X		

Specifications

	ExaPad	ExaPad Mini	ExaPad Micro
Console form	Touchscreen		
Probe connectors	2	1	1
Screen size	14 inches	12 inches	10 inches
Optional trolley	Yes	Yes	No
Battery life	60 mins	90 mins	90 mins
Optional external charger	No	No	Yes
Built in stand	Yes	Yes	No
Optional stand	No	No	Yes
Weight	6kg	4kg	2kg
Height	300mm	250mm	200mm
Width	390mm	320mm	280mm
Depth	70mm	58mm	55mm
Warranty	2 years		
Colour Doppler	Yes	Yes	Yes
Pulse wave doppler	Yes	Yes	Yes
Continuous wave doppler	Yes	Yes	No
ECG	Yes	No	No



Easi-Scan:Go

Fast, light and with minimal set-up time required, the Easi-Scan:Go is ready to go when you are, providing speedy results without sacrificing accuracy. Biosecurity is not an issue as the scanner is waterproof and completely sealed. This contributes to an even more efficient workflow on the farm.



References

- ESG-SCANNER-L – Easi-Scan:Go Linear
- ESG-SCANNER -C – Easi-Scan:Go Curve

Specifications:

Probe	Sealed, linear and curve, 128 elements
Charger	Stand-alone charger, can be used in the car
Battery life	Up to 5 hours
Waterproofness	IP 67, waterproof
Viewing device	Smartphone, Tablet, VGA and OLED goggles
Equine	Reproduction
Dimensions	190 x 83 x 62
Weight	850g
Warranty	2 years

Key benefits

Easi-Scan:Go Linear and Curve

- Fully sealed unit ensuring waterproof to IP67 standard
- Exceptional image quality allowing for full fertility examinations as well as non-reproductive applications such as teat scanning, lung scanning, uterine scanning, post-calving examinations and body condition assessment
- Connection with Farm Management systems to allow full picture of mare health displayed on the ultrasound image. KPI detail such as age, last inseminated, milk yield can all be visible for each individual mare. (restrictions apply)
- Connect up to 3 smart devices or BUG:Go to view the image simultaneously
- Weighs only 850 grams and can be securely attached to a belt
- Images and clips saved directly on your phone or tablet

Applications

- Abdominal
- Gynecologic
- Non-reproduction

Related features

CFM (Colour Flow Mapping) exclusive to Easi-Scan:Go

- Negative pregnancy diagnosis from 12 days after AI
- Foetus viability confirmation (heart)
- Recipients mares for embryo transfer purpose .
- Confirmation of dominant follicle pre ovulatory
- Twin pregnancy check



ImaGo range

On the go reproduction focus ImaGo range is made for equine vets on the go. ImaGo's rugged, portable design and excellent image quality ensures you're always ready for high-quality care, when working across multiple farms and to busy schedules thus reducing the time and cost up to 10%.



References

- ImaGoV2 with linear probe ImaGo-V2-L
- ImaGo V2 with curve probe ImaGo-V2-C
- ImaGo Flex V2 with removable probes ImaGo-V2-Flex

Probe compatibility:

Product	Flex
LR760V	X
L738V	X
C360S	X
L3130B2	X
OPU E610B	X
OPU E614B	X
L3180B	X

Key benefits

ImaGo L&C

- Presets for different species to ensure a quick start
- Lightweight and small -1.18 kg
- Interchangeable 4 hours battery can be charged in the car
- Ensures biosecurity as it can be washed in the bucket of water and submerged (IP67 standard)
- With colour flow doppler mode ImaGo helps detect non-pregnant mares earlier saving up to 4 euro per day per mare

ImaGo Flex

- Presets for different species to ensure a quick start
- Lightweight and small -1.5 kg
- Interchangeable 4 hours battery can be charged in the car
- 7 probes can be connected
- With colour flow doppler mode ImaGo helps detect non-pregnant mares earlier saving up to 4 euro per day per mare

Applications

- Reproduction
- Musculoskeletal diagnosis pre-check
- ICSI

Related features

CFM (Colour Flow Mapping)

- Negative pregnancy diagnosis from 12 days after AI
- Foetus viability confirmation (heart)
- Recipients mares for embryo transfer purpose
- Confirmation of the dominant pre-ovulatory follicle
- Twin pregnancy confirmation

Specifications:

	ImaGo L&C	ImaGo Flex
Probe connectors	0	1
Screen size	6.5 inches	6.5 inches
Battery life	4 hours	4 hours
Optional external charger	Yes	Yes
Weight	1.18 kg	1.5 kg
Dimensions	21x9x17 cm	21x7x17 cm
Colour Doppler	Yes	Yes
Resets	More than 15	More than 47
Waterproofness	IP 67	IP32
Warranty	2 years	2 years



Calving gown

With its long fitted sleeves and back cutouts, this gown is designed to be very strong and offer good protection. Available in two lengths.

References

Green:	Clear:
024265 - 140cm	025588 - 140cm
024263 - 155cm	025586 - 155cm



Overboot

Polyethylene overboots with 43x53 cm double elastics for heavy-duty use.

Reference

024242 - Overboot





Sterile Polytactyl glove

Individually-packaged sterile glove designed to be used during all stages of equine embryo transfer. 2 sizes available.

Polysem's sterile Polytactyl glove provides comfortable wear and very good protection for procedures.

Thickness 33µ - 92 cm - Size M - L - Yellow color

Reference

025471 - Sterile Polytactyl glove - Size M

024227 - Sterile Polytactyl glove - Size L



Copolymere



Perfectly designed for procedures requiring an excellent tactile touch and perfect accuracy (ultrasounds, palpitations, etc.).

Thickness 23µ

References

027817 - Copolymere Clear glove 100 cm - with removable strip - Size S

024185 - Copolymere Clear glove 100 cm - with removable strip - Size M

024183 - Copolymere Clear glove 100 cm - with removable strip - Size L

027922 - Copolymere Clear glove 100 cm - with removable strip - Size XL



Super sensitive glove

A silky copolymer, full-length glove with excellent tactile sensitivity. Preferred for high accuracy tasks such as reproduction ultrasonography.

Thickness 24µ

Reference

024761 - Super-sensitive clear glove with grip attachment 1M





Vetorange range



Vetorange Soft:

Precision and durability meet in Vetorange Soft gloves, offering heightened sensitivity for delicate veterinary procedures, ensuring reliable performance for professionals who prioritize both precision and durability.

Thickness 24µ - 92 cm - Size L

Vetorange Plus:

Vetorange Plus gloves provide exceptional resilience with a secure neck attachment, ensuring optimal glove retention during veterinary procedures, making them a reliable choice for high-performance tasks.

Thickness 30µ - 100 cm - Size M - L

Vetorange Classic:

Balancing sensitivity and durability, Vetorange Classic gloves are versatile, offering robust resistance for everyday veterinary tasks, catering to diverse needs with reliable performance.

Thickness 28,5µ - 92 cm - Size L



References

- 024194 - Vetorange
- 030135 - Vetorange Plus - Size M
- 027976 - Vetorange Plus - Size L
- 024197 - Vetorange soft



Green Air Gloves



The Green Air Glove has the Ok Compost Industrial certification, ultra-breathable glove.

Thickness 21µ

Reference

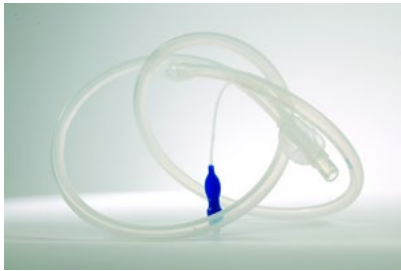
- 026066 - Green Air Glove 92 cm - Size L





Discover our range of products for Equine embryo transfer. We work every day to offer you quality products based on cutting-edge technology, safe and effective solutions for the equine artificial insemination process.

Embryo collection



References

005606 - Catheter 150 cm for equine embryo flushing

Accessories

007312 - Equine E.T. gravity set

005525 - Right Kocher forceps - 16 cm without holders

007778 - Clip bottle



References

017724 - Y-Tubing without filter

017725 - Y-Tubing with filter

017726 - EZ filter



References

019450 - Euroflush

Embryo flushing media with a pH detector, made with ultra pure water.

Contains BSA + antibiotics.

022008 - EmXcell

Embryo Flushing Media with pH

Embryo flushing media with a pH detector, made with ultra pure water.

Avoid bubbles as no surfactant agent

023054 - EMXCell for gravity flush embryo collection medium

References

026221 - Needle 1 for flush by gravity 300x3 mm

026222 - Needle 2 for flush by gravity 30x4 mm



References

025471 - Sterile Polyactyl glove - Size M

024227 - Sterile Polyactyl glove - Size L

023917 - B-lube

019665 - Sterile lubricant gel



Laboratory equipment



Reference

023432 - Laminar flow cabinet



Reference

029095 - BT37 V2 Benchtop Incubator



Reference

029096 - 6 Bottles + 3 Filters Kit For BT37 V2



Reference

029331 - 17 liters water bath stainless steel with cover



References

014498 - Micropipetter

Laboratory material

Laboratory equipment: the micropipetter is used to manually fill all types of straws and handle embryos

006359 - Equine ET micropipette

018930 - Equine D8 ET micropipette



References

023863 - Binocular zoom microscope

Microscope used to observe and handle embryos and cells.

It supports x60 magnification.

020108 - Sterilized dish 4 wells

020107 - Sterilized dish 6 wells

020103 - Sterilized dish 12 wells

024605 - Sterilized PETRI dish

022376 - Sterilized PETRI dish



Sterile mini crystal straw

Sterile mini straw for the packaging of embryos. The straw is made of crystal, offering a better visibility under a microscope.

Reference

005592 - Crystal sterile ET mini 133 mm straws

Key benefits

- This straw is sealed with a plugging rod.
- The crystal offers better visibility of the embryo under a microscope.



Flexible sterile ET mini



Reference

006430 - Flexible sterile ET mini 133 mm straws

Key benefits

Easy to fill inside the embryo as flexible

D8 ET sterile medium straws

Medium straws used to package large equine embryos (Day 8).

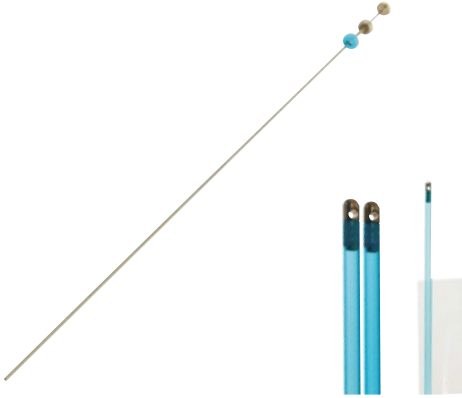
Reference

017531 - Pack of 2x4 equine D8 ET sterile medium straws





Embryo transfer



References

- 007246 - ET applicator for \varnothing 3 mm sheath for uncut straws-deep chamber
- 007240 - ET applicator for \varnothing 3 mm sheath for cut straws
- 006384 - ET sterile sheath \varnothing 3 mm with sanitary sheath x1

Transfer of embryo day 8

This syringe, or applicator, is used with medium straws, to carry out embryo transfer.



References

- 024857 - E.T. applicator for D8 equine embryo V2
- 017532 - Equine D8 ET sterile medium unsplit sheath (per 5x10)



Range of ultrasound scanners

Range of ultrasound scanners for quality control of the donor and recipient, pregnancy diagnosis, twin pregnancy check, fetal sexing



Product ranges:

- Exapad range
- IMAGO L/C and Flex
- Easi-scan go

For more details, refer to the product pages in the "Preliminary diagnosis" section.

OPU probes for embryo transfer

Probe compatibility

Product	
OPU E610B - OPU, thin probe 	Thinner Probe: ideal for small mares and hieifers
OPU E614B - OPU, thicker probe 	Thicker Probe: ideal for better image penetration (deeper structures)

The OPU probe box includes:

References

- 20-3004 - MTX screw
- 22-1993 - Guide handle
- 22-2483 - Needle guide G18
- 22-2499 - XL Scabbard (42.5cm)
- 22-3009 - Needle 60mm 18G
- 80-2997 - Storage box
- 80-3000 - Suitcase + OPU foam
- 80-3565 - Silicon Tube G18 1.0, 1X2.6 mm
- 22-3363 - Horizontal slider grip

Related features

CFM (Colour Flow Mapping) for:

- Negative pregnancy diagnosis from 14 days in mares after AI
- Faetus viability confirmation (heart)
- Recipients mares for embryo transfer purpose .
- Confirmation of dominant follicule pre ovulatory
- Twin pregnancy check

Specifications

	ExaPad	ExaPad Mini	ExaPad Micro
Console form	Touchscreen		
Probe connectors	2	1	1
Screen size	14 inches	12 inches	10 inches
Optional trolley	Yes	Yes	No
Battery life	60 mins	90 mins	90 mins
Optional external charger	No	No	Yes
Built in stand	Yes	Yes	No
Optional stand	No	No	Yes
Weight	6kg	4kg	2kg
Height	300mm	250mm	200mm
Width	390mm	320mm	280mm
Depth	70mm	58mm	55mm
Warranty	2 years		
Colour Doppler	Yes	Yes	Yes
Pulse wave doppler	Yes	Yes	Yes
Continuous wave doppler	Yes	Yes	No
ECG	Yes	No	No



Training

Our field Application specialists and scientists will train your team members on the different process of the laboratory to ensure that the final product will be of high quality. We offer essential and advanced training in one to two-days format, either at your facilities or at IMV Technologies offices.

References

Equine

- 023880 - Equine semen processing training 3 days on site
- 023879 - Equine reproduction training 3 days at IMV and Haras du Pin
- 023878 - Equine semen processing training 1 day on site

Semen analysis

- 026346 - Installation training IVOS II Pro CEROS II 2 days on site
- 026347 - Installation training IVOS II fluo 3 days on site
- 026348 - Installation training EasyCyte 2 days on site

Support

We understand that the intensive nature of our 1 to 3-days training sessions can be overwhelming. To ensure your confidence and seamless implementation, we offer continuous support following the installation and training. This service can be done remotely.

References

- 026349 - Semen analysis expertise 1 day on site
- 028839 - Semen analysis expertise 1h remote

Our training offer

IMV Technologies provides tailored biological trainings, specific ready-to-use standard protocols and global approach to meet your needs in Reproductive Biotechnologies. Emphasizing a hands-on approach with practical exercises, we complement theoretical principles for optimal use of our products, extending our focus to provide personalized guidance. Our data-driven support beyond training helps you in overcoming challenges for your desired outcomes.

Equipment installations: biological and technical expertise

Our team composed of experts, PhD or vets will install your equipments that require biological expertise such as semen analysers (CASA, cytometer) or ultrasound scanners. Two main formats with several trainings per species are available.

Essential (One-day format)

Advanced (2-days+ format)



Number of trainings subjects



Contact us: academy@imv-technologies.com

More details: www.imv-technologies.com/training-programs

Download our complete training catalogue:

<https://www.imv-technologies.com/academy/field-application-service>



Since 1963, IMV Technologies has been manufacturing its own equipment and controlling over the entire process, encompassing design, installation, maintenance, and the machine's lifecycle until its retirement.



Equipment installations

Our team of experts will install your new equipment and ensure it is tailored to your needs, maximising efficiency.



Equipment training

After installing your equipment, our service technicians will train your team and ensure they know how to get the most out of the product. Each training is adapted to customer needs.

We offer three types of training:

- Onsite equipment training
- Equipment training for customers at the IMV Technologies corporate offices
- Remote training



After sales support

IMV Technologies' equipment is designed to last. To ensure the equipment always operates with optimal efficiency, we offer both preventive and corrective maintenance as well as maintenance contracts.

In the unlikely event of a breakdown, we offer three types of service:

- Telephone / Remote support
- Onsite repairs
- Product is returned to one of our service centers



Service Contracts

	EXPERT CONTRACT	PREMIUM CONTRACT
Preventive Maintenance Kit	X	X
Preventive Labor	X	X
Preventive technician's travel time	X	X
Hotline Free telephone assistance	X	X
Hotline Call priority	X	X
Software Upgrade	X	X
Spare parts (Corrective Maintenance)	50% Included	X
Labor (Corrective Maintenance)		X
Public holliday assistance		X
Technical training during Preventive Maintenance		2 hours*

*Excluding application training, please contact us for more information.

More details:
www.imv-technologies.com/customer-service



- Our IMV Technologies offices
- Main distributors

Our global network: more than 120 distributors supporting you worldwide

France

● **IMV Technologies Headquarters**
 +33 2 33 34 64 64
 61300 - L'Aigle
 welcome@imv-technologies.com

IMV imaging

16000 - Angoulême
 france@imv-technologies.com

Polysem

78120 - Rambouillet
 welcome@imv-technologies.com

The Netherlands

Leja
 Nieuw-Vennep - 2153 GN - North Holland
 info@leja.nl

NIFA Technologies

Leeuwarden - 8938 AS - Friesland
 www.nifa.nl

Scotland

IMV Technologies UK
 Bellshill - ML4 3NJ - North Lanarkshire

Spain

Imporvet
 Barcelona - 08540 Centelles - Catalonia
 int@import-vet.com

United States

IMV Technologies USA
 Brooklyn Park - 55445 - Minnesota
 contact@imvusa.com

IMV Technologies USA

Rochester - 55901 - Minnesota
 info@imvusa.com

Canada

Ro-main
 Saint-Lambert-de-Lauzon
 G0S 2W0 - Quebec
 info@ro-main.com

Brazil

IMV Technologies Brazil
 Campinas - 13030-300 - Sao Paulo
 contato@imvbrasil.com.br

China

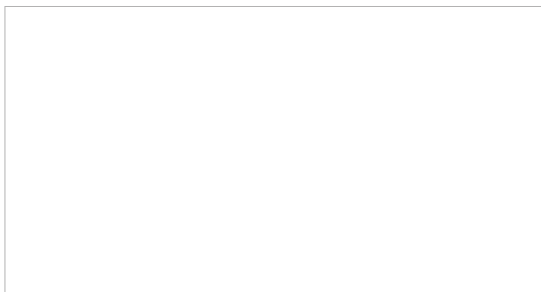
IMV Technologies China
 201203 - Shanghai
 contact@imvchina.com

Nelson Techno Medical Co

Changzhou - Jiangsu - China
 contact@imvchina.com

India

IMV Technologies India
 Gurugram - 122016, Haryana
 contact@imvindia.com



www.imv-technologies.com